



# KLET OBSERVATORY

## NEO follow-up astrometry programme

**Jana Tichá**  
**Miloš Tichý**  
**Michaela Honková**  
**Martin Janda**

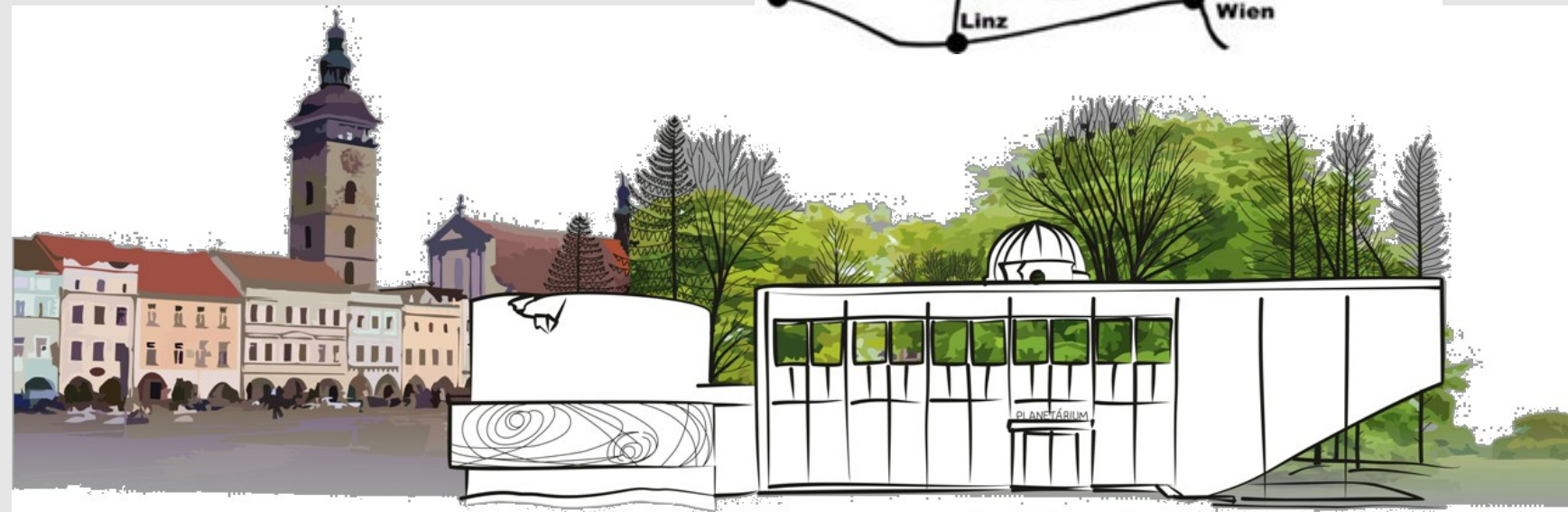
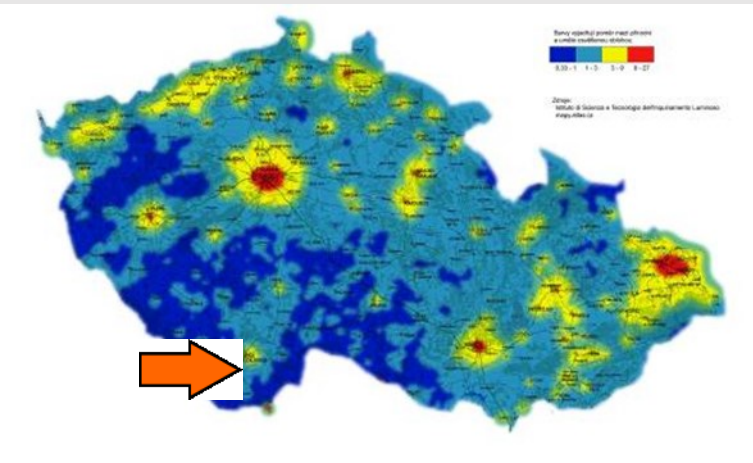
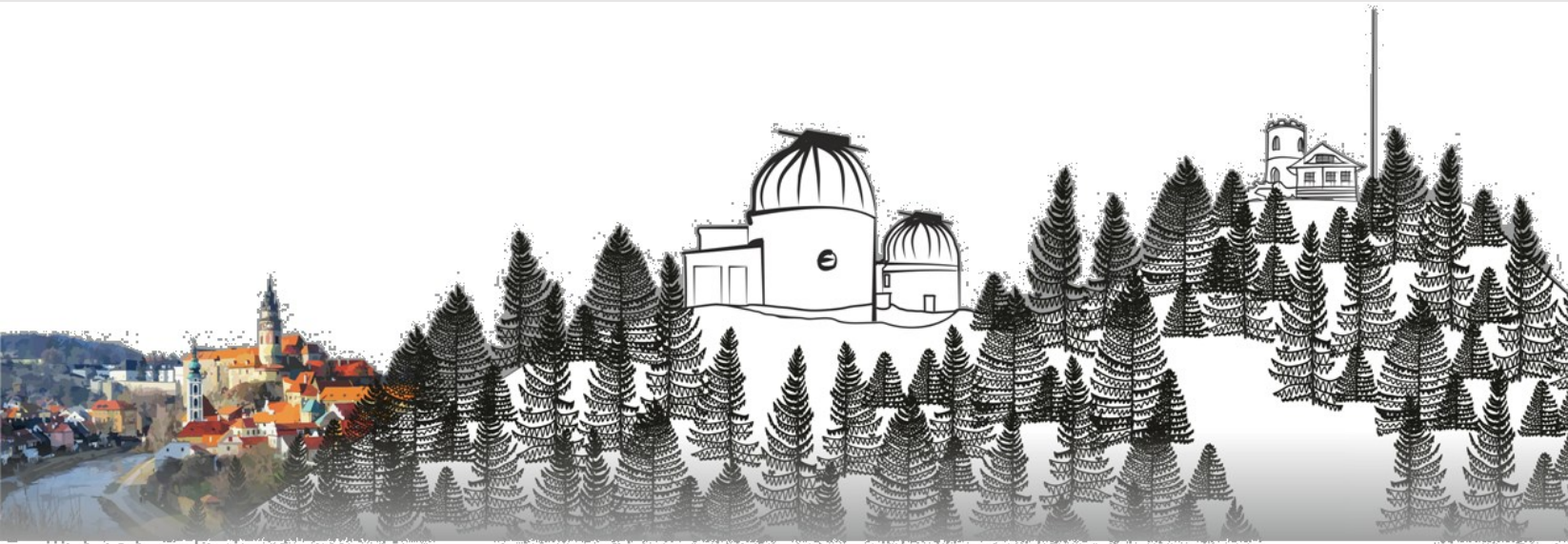


**17th Steering Comm.**  
**Meeting of IAWN,**  
**October 26, 2023**





# KLET OBSERVATORY NEO follow-up astrometry programme

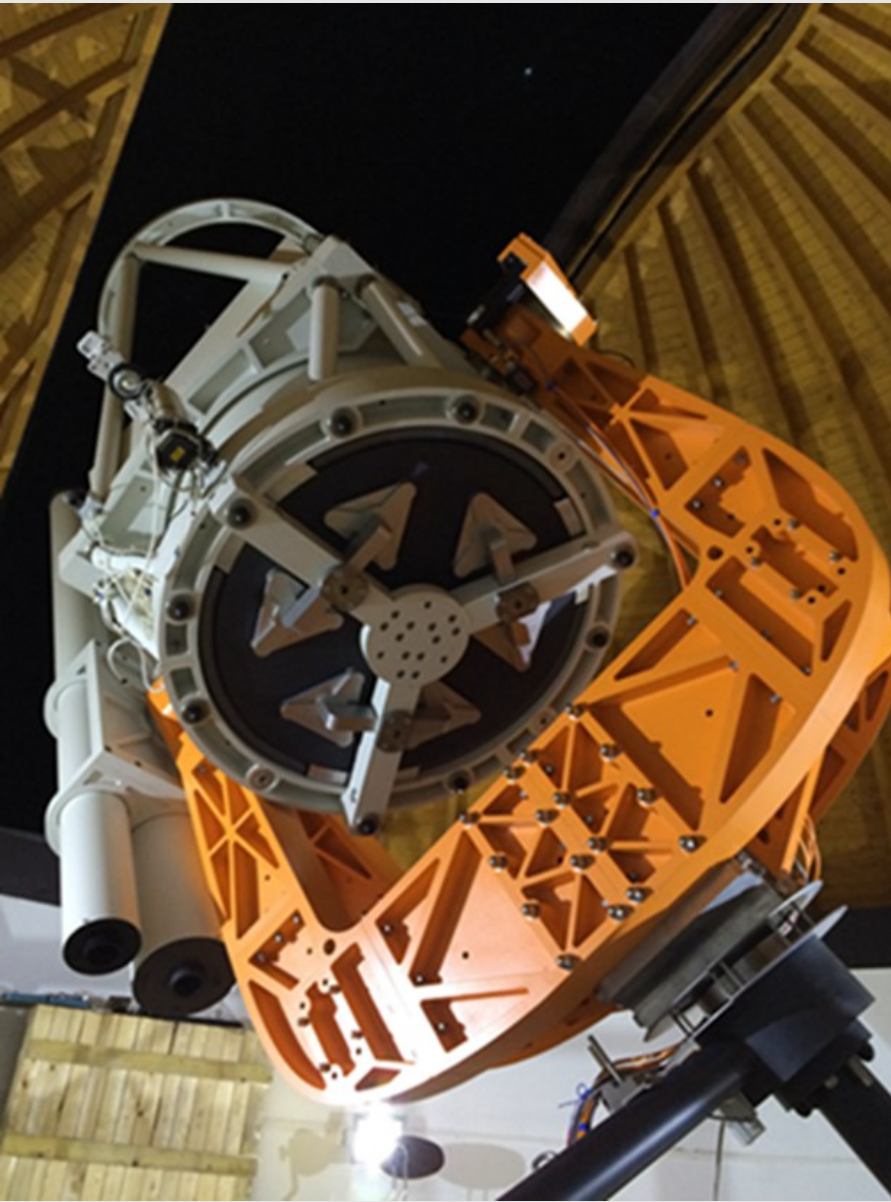




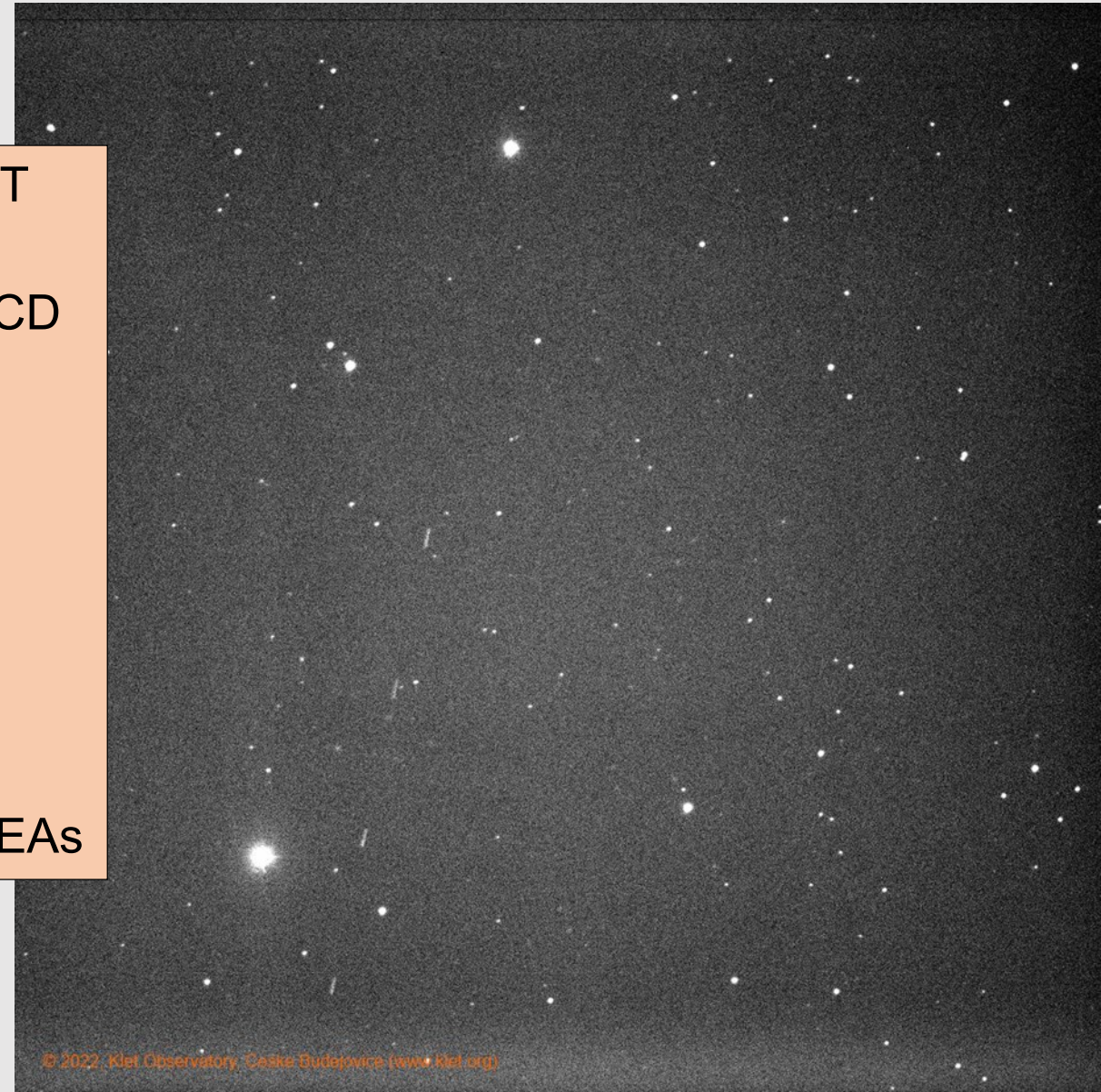


# KLEŤ OBSERVATORY NEO ASTROMETRIC FOLLOW-UP

## MPC codes 046 and 246 (KLENOT)



- 1.06-m KLENOT Telescope
- 2k x 2k F.L.I. CCD
- FOV 2k x 2k
- 50 000 NEO measurements
- confirmations, early follow-up, space mission, radar targets...
- 3 discovered NEAs







# KLET OBSERVATORY

## Klet SW package

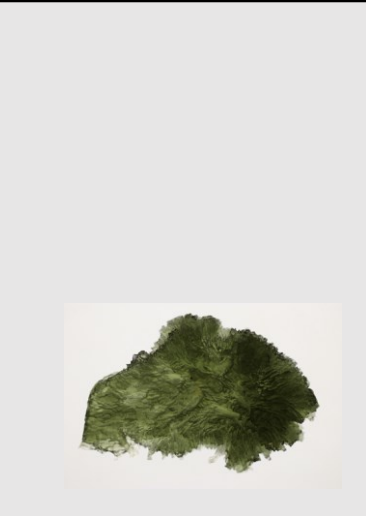
The screenshot displays the Klet SW package interface, which is used for astronomical observations and data processing. It consists of several main windows:

- KLENOT ATLAS COELI:** Shows a star field with a red crosshair indicating the current field of view. The status bar at the bottom shows RA: 10:44:34.36, Dec: +07:35:38.97, and other parameters.
- FLI Camera control:** A control panel for the camera, showing file tools, mode (2Mhz), and various buttons like 'Grab', 'Repeat', and 'BLINK'. It also displays the current RA and Dec coordinates: KLENOT: R.A.=01:36:27, decl.=+16°08'04" (live).
- TIGHEVNC: SELSYN:** A control panel for the telescope, showing manual control buttons (up, down, left, right), target coordinates (RA: 10:45:40.00, Dec: 7°25'0.00"), and various status indicators like 'PŘIPRAVEN' (Ready) and 'Konec' (End).
- SAOimage ds9:** A software window for image processing, showing a star field with a red crosshair. The status bar at the bottom shows RA: 1052, Dec: 1179, 1437, 1945, 2972, 5002, 9044, 17203, 33339.





# KLET's NEO AND PLANETARY DEFENSE EDUCATION and PUBLIC OUTREACH



- 750 000 visitors since 1992
- 25 000 visitors per year
- 60% school excursions
- digital planetarium
- cinema hall
- observing dome and terrace
- observatory garden
- outdoor exhibition
- thinking and emotions





# The President of the Czech Republic Petr PAVEL visited KLEŤ OBSERVATORY on 2023 July 18





# KLET OBSERVATORY ADVANTAGES

- full observing time is dedicated to the KLENOT team
- long-term NEO activities at Klet (since 1992)
- experienced observers/measurers visually validate each moving object candidate
- real-time processing of targeted objects and data flow to the MPC/ESA
- ESA cooperating sensor since 2014
- quick changes in an observing plan possible, even during an observing night



**WE ARE READY TO COOPERATE !!!**

**<http://www.klet.org>**